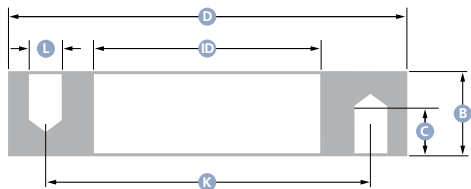


Bulkhead flanges (double)



Alloy: 5083



DN	D	ID	B	C	K	L
15	95	17	30	15	65	4 x M12
20	105	22	30	15	75	4 x M12
25	115	27	30	15	85	4 x M12
32	140	36	35	20	100	4 x M16
40	150	42	35	20	110	4 x M16
50	165	54	35	20	125	4 x M16
65	185	70	35	20	145	4 x M16
80	200	82	35	20	160	8 x M16
100	220	107	35	20	180	8 x M16
125	250	130	35	20	210	8 x M16
150	285	160	40	25	240	8 x M20
200	340	205	40	25	295	8 x M20