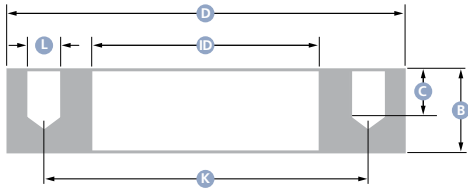


# Bulkhead flanges (single)



Alloy: 5083



DN	D	ID	B	C	K	L
15	95	18	30	15	65	4 x M12
20	105	26	30	15	75	4 x M12
25	115	34	30	15	85	4 x M12
32	140	43	35	20	100	4 x M16
40	150	49	35	20	110	4 x M16
50	165	61	35	20	125	4 x M16
65	185	77	35	20	145	4 x M16
80	200	90	35	20	160	8 x M16
100	220	115	35	20	180	8 x M16
125	250	141	35	20	210	8 x M16
150	285	170	40	25	240	8 x M20
200	340	221	40	25	295	8 x M20