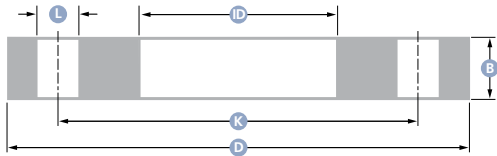


Welding flanges



Standard: EN 1092-1 TYPE 01 (DIN 2576)

Alloy: 5083



DN	D	ID	B	K	L
15	95	22	15	65	4 x 14
20	105	27	15	75	4 x 14
25	115	32	15	85	4 x 14
32	140	43	15	100	4 x 18
40	150	52	15	110	4 x 18
50	165	62	20	125	4 x 18
65	185	77	20	145	4 x 18
80	200	92	20	160	8 x 18
100	220	116	20	180	8 x 18
125	250	142	20	210	8 x 18
150	285	162	20	240	8 x 22
200	340	221	25	295	8 x 22
250	395	276	25	350	12 x 22